

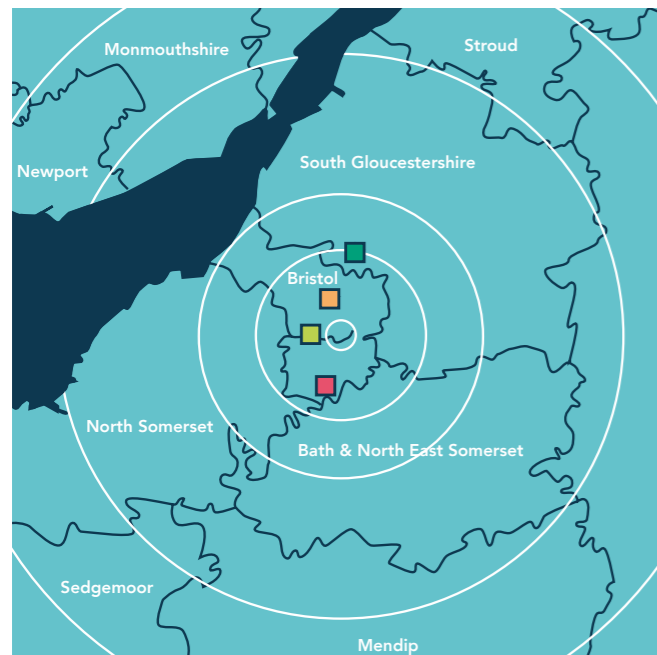
The future starts here

Developing a curriculum
fit for the future

2018-2030

Contents

	Page
The City of Bristol's College	3
Message from the Principal and Chief Executive	4-5
Delivering our vision	7-9
Developing a curriculum for the future	10-13
Our future-fit curriculum 2018-2030	15-17
The future starts here	18-19



■ Ashley Down Centre



■ College Green Centre



■ Parkway – Advanced Engineering Centre



■ South Bristol Skills Academy



The City of Bristol's College

We support over 12,000 people each year through our education and training. This includes 3,000 young people aged 16-19 studying A Levels and technical qualifications, 1,500 apprentices and 1,000 higher education students. We also support over 6,500 adults of all abilities with professional development and work-based learning; core skills such as English, maths and digital skills; and a range of leisure interests.

We invest in our city. We employ 1,000 people in teaching and professional services and we have fantastic facilities across the city.



Message from the Principal and Chief Executive

The city of Bristol is a growing, fast-paced, vibrant and creative place to live, work and learn. As the city's further education college, we are committed to meeting the needs of students, employers and communities.

Our college values of integrity, respect, ambition and pride are reflected in all that we do.

Ambition is at the heart of our reinvigorated curriculum, which closely aligns what we do to the current and emerging demands of the city and the region's economy.



Lee Probert,
Principal and Chief Executive,
City of Bristol College

Our vision

We will ensure that individuals, employers and the wider community are equipped with the skills and knowledge they need to thrive in the changing, modern economy. We are focused on progress. Progress to higher levels of learning, into and within work and, for some of our most vulnerable students, support and progress to living independently.

A new curriculum fit for the future

The government's Industrial Strategy focuses on the development of high quality technical and professional skills to support the UK's economic development. In Bristol, we know that securing high quality skills in our most important industry sectors is central to our success. And so, at City of Bristol College, we have aligned our curriculum strategy to the city region's key economic growth areas. Working with us, individuals and businesses can access college or workplace learning in all subjects and sectors, with clear routes into employment.

Making a positive difference

We make a positive difference to many people and organisations in the city and the region. We currently support over 12,000 people each year, of all abilities and ages. We equip them with the knowledge, skills, experience and qualities they need to progress and succeed in their learning and careers. Their progress and potential is enhanced by excellent teaching, training and support, and by our extensive, specialist facilities. Our new curriculum and development plans will enable us to have an even greater positive impact.

Exciting times for our college and our city

We are looking forward to developing new and innovative approaches to education and training to ensure the continued success of the city, its businesses and communities. This is an exciting time for our college and our city. With your help, the future really does start here.



Delivering our vision

Our development plans for the college and our new curriculum focus clearly on maximising future benefits for the city and its communities. Our position as a key provider of education and training in Bristol and beyond, is strengthened by our aim and ability to deliver positive social and economic impact.

" The West of England is a highly skilled region, but we still have skills gaps in some areas, including advanced engineering and manufacturing.

City of Bristol College's fantastic engineering facility, designed specifically to meet the needs of our regional employers, will help us to bridge that gap, and boost business growth across the region. We need a motivated workforce with the skills businesses need to succeed. Projects which combine education and skills closely with business needs, open up opportunities that help to ensure everyone – regardless of background or personal circumstances – can develop the right skills to fulfil their potential. "

Tim Bowles, West of England Mayor



Focused development

To achieve our vision, we will focus on the following areas of development:



Delivering an innovative curriculum fit for the future

Our new, innovative and ambitious curriculum strategy is centred around market needs for jobs and skills. It is robust and flexible; able to deliver benefits now while adapting to future trends.



Supporting regional economic priorities and skills needs

Our curriculum strategy supports economic growth in the West of England economic priority areas, addressing the associated skills needs of employers and individuals.



Raising aspirations and improving progression

We are building a culture of continual learning at college and in the community, to raise aspirations, employment prospects and progression at all levels. We are raising awareness of opportunities among the communities we serve, supported by informed and effective careers guidance.



Enhancing staff expertise and student success

We are developing up-to-date skills, knowledge and resources and innovative teaching techniques across the curriculum. This will ensure students are inspired, able to meet changing occupational needs, and that they are successful in their learning and careers.



Extending opportunities and access to learning

We are extending our curriculum and making it easier for individuals and employers to access a wide range of learning to support ongoing professional development. This includes opportunities at all levels to learn at college, in the workplace, online, or through blended study programmes.



Building productive partnerships

We are collaborating with partners in business, education and the communities we serve, to ensure our curriculum and college is effective for students and employers alike. This includes co-design and co-delivery of our curriculum in conjunction with employers.



Developing our reputation for excellence and impact

By enhancing our reputation for educational excellence, we are establishing City of Bristol College as the provider of choice for quality, accessible education and training, that delivers economic and social mobility impact.



Securing strong finances and fantastic facilities

We have a robust and sustainable financial plan to ensure that our curriculum and facilities meet the needs and expectations of individuals, employers and the city.

Developing a curriculum for the future

Our future curriculum strategy reflects the growing demand for skills to support the West of England's economic priorities, alongside government reforms to enhance technical education and work-based training in the UK.

" I recently judged a student competition to design a new app, organised by the charity 'Inspire Young People' and won by IT students from City of Bristol College.

The competition was a great example of how businesses can collaborate with education providers to enhance learning with real work skills and knowledge. I really enjoyed working with these young people; hearing their ideas and being able to add value through my own experience."

Andy Weller, *Managing Director, Prolinx*



Technical education and work-based training

The government's economic strategy places the acquisition of technical skills at the heart of post-16 education in the UK, particularly in economic growth areas. The aim is to put classroom-based technical education and work-based training and apprenticeships on an equal footing with academic qualifications.

The focus is on improving quality through new qualifications and standards and extending opportunities to support continual learning and career progression at all levels. This includes opportunities for higher level technical qualifications and apprenticeships, and enhanced entry level learning to help young people make the transition into further learning and work.

Curriculum pathways

Our new curriculum is structured around two distinct but interconnected pathways: college-based learning and work-based learning. Both pathways provide opportunities to gain technical knowledge and skills, as well as clear progression routes into occupations or further study. Students will be able to move between pathways as they progress, in line with their learning and career goals and their personal and professional development.

“ City of Bristol College is one of our key Learning City partners and we share a commitment to working together, united behind the ambition to ensure Bristol's success can be shared by everyone.

As the largest education and skills provider in Bristol, the college plays a vital role in giving young people the skills needed by the city's businesses, which helps our communities and economy to flourish.”

Marvin Rees, Mayor of Bristol



Progression routes into skilled employment

We have clearly defined progression routes for college-based technical education and work-based learning within industry sectors. These progression routes set out the extensive range of learning opportunities, levels and entry points available, linked to a wide variety of occupations within the following sectors:

- Agriculture, Environment and Animal Care
- Business and Administration
- Catering and Hospitality
- Childcare and Education
- Construction
- Creative and Digital
- Engineering and Manufacturing
- Hair and Beauty
- Health and Science
- Legal, Financial and Accounting
- Protective Services
- Sales, Marketing and Procurement
- Social Care
- Transport and Logistics

West of England economic priorities

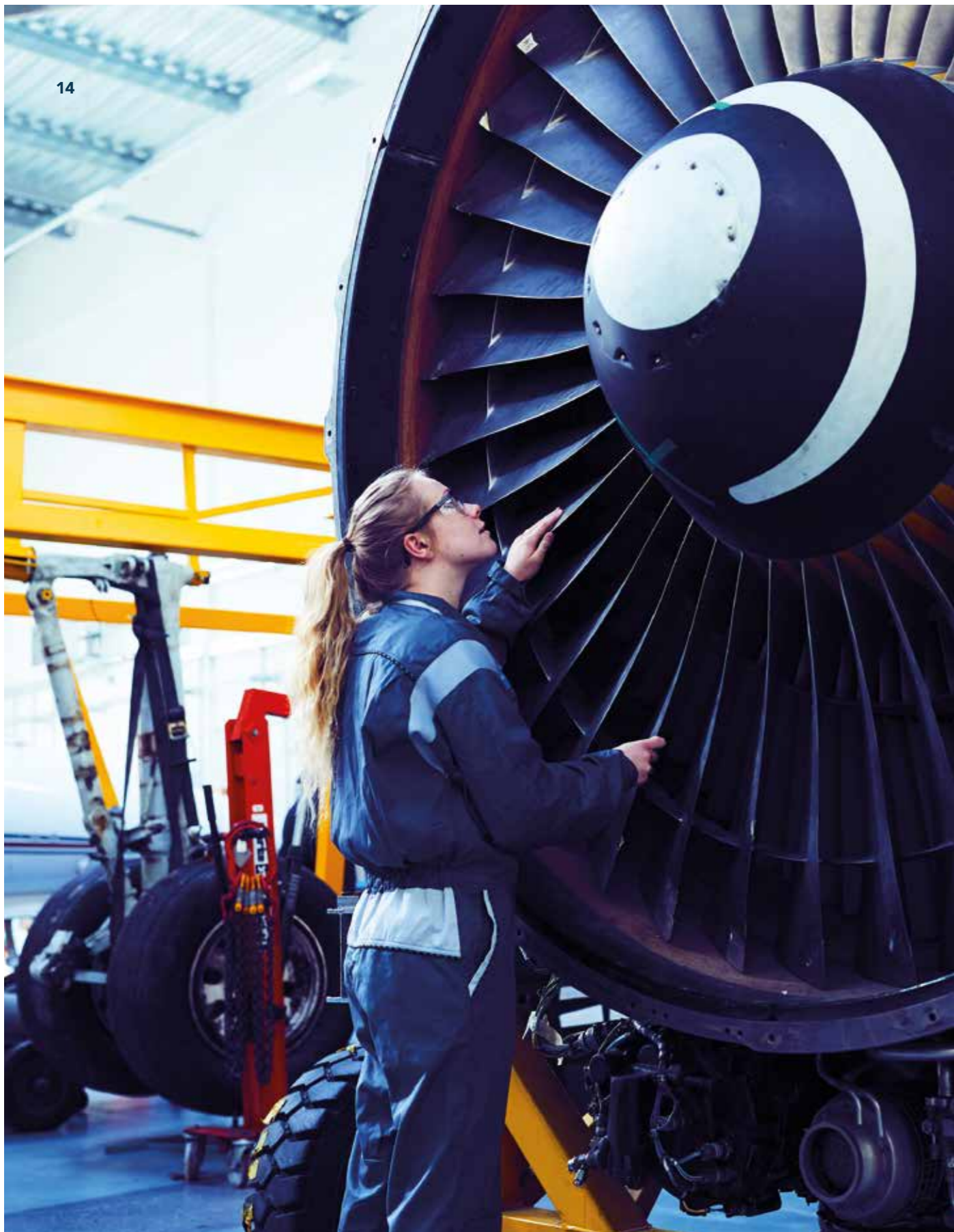
Our curriculum strategy supports regional and national priorities for economic development and skills growth, meeting the needs of the city, employers and individuals. Regional priorities include the following broad industry areas:

- Advanced Engineering and Aerospace
- Creative and Digital
- Construction and Development
- Health and Life Sciences
- High Tech
- Low Carbon Technologies
- Professional and Financial Services

Meeting employer needs

Employers highlight two key development areas for existing and future skills needs, based on their demands:

- Training to provide higher level technical skills, leadership development and extended learning and progression pathways, developed and delivered in partnership with businesses.
- A demand for a work-ready workforce at all levels, equipped with up-to-date technical skills, knowledge and professional behaviours.



Our future-fit curriculum 2018-2030

Our curriculum will extend the breadth of quality technical and work-based provision at all levels, and increase skills, access and progression opportunities in the following regional economic priority areas: construction and development, creative and digital, engineering and infrastructure, health and life sciences, high tech, professional, business and financial services.

" We've worked closely with City of Bristol College for over eight years, recruiting and training over 160 apprentices.

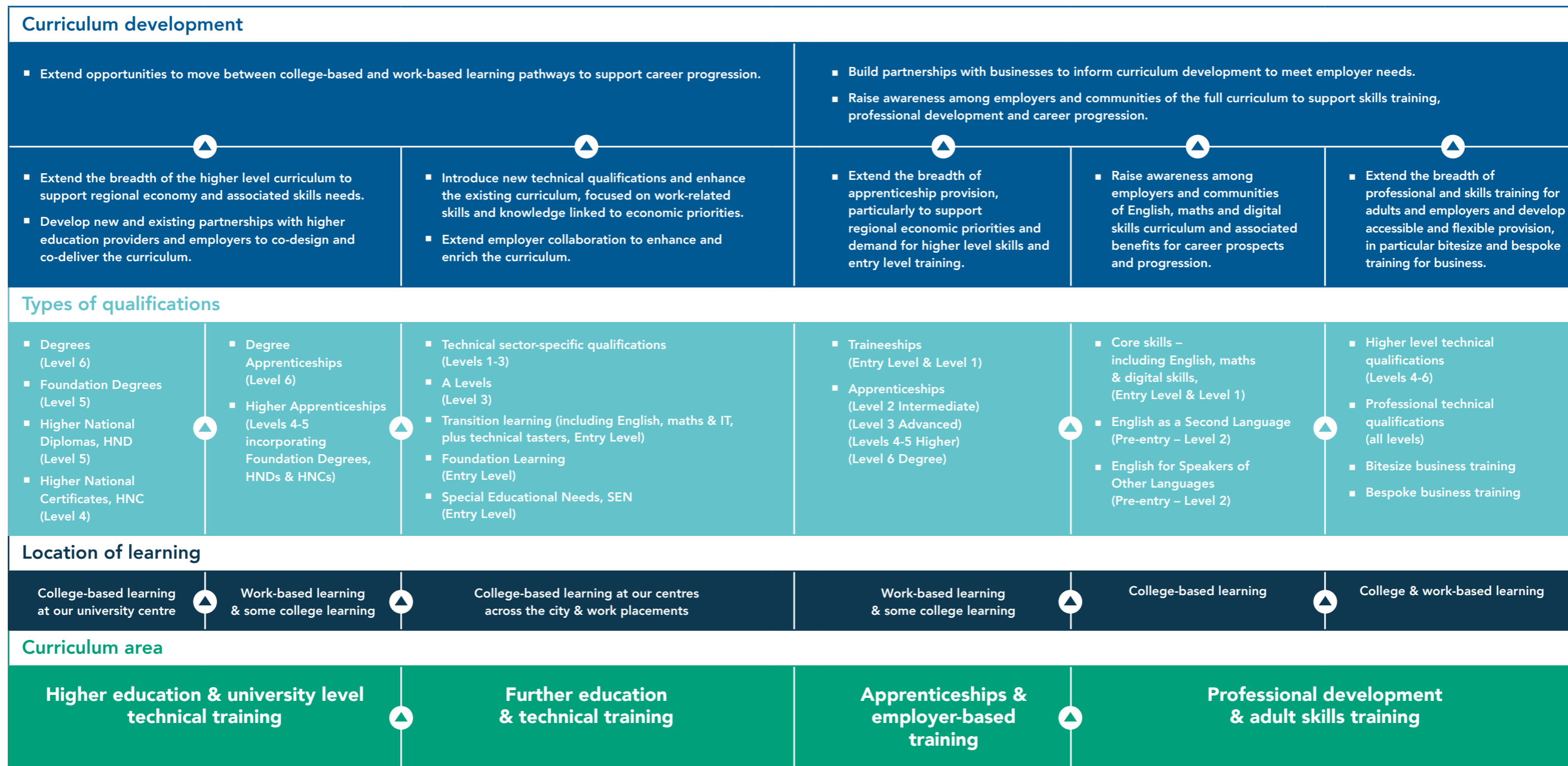
We've also worked with the college and UWE to design and deliver a very successful aerospace engineering degree apprenticeship, which was the first of its kind in the UK. Our apprentices become an integral part of our team and the training they receive is at the forefront of their development. "

Tony Rooke, Head of Early Careers, Airbus

AIRBUS

Curriculum development strategy

Progression routes into skilled employment



The future starts here

We are excited about the future. We have clear and achievable ambitions for our college and our curriculum to support the development of Bristol and its communities. While we continue to provide quality education and training to meet existing and emerging needs, we are building strong foundations for future development.



Next steps

Delivering effective change takes time, planning and preparation. We are committed to moving forward at a pace that benefits our students, our partners and the wider community. As we phase in initial changes, such as new courses and more accessible and flexible learning opportunities, we are also focused on our core development priorities (see pages 8-9).

We are building partnerships, collaborating to co-design and co-deliver a curriculum linked to economic needs, alongside building the skills, expertise and resources we need to implement longer-term changes to maximum effect.

Work with us

Engaging businesses and other key stakeholders in the future development of our curriculum will not only benefit the college but first and foremost the stakeholders and communities we serve. We consider collaborative working to be crucial to ensure maximum and mutual benefit for the city, for individuals, employers and for our college.

Contact us:

If you would like to find out more about City of Bristol College, or want to explore ways we can work together, please get in touch.

Business Partnerships and Enterprise Team:

0117 312 5250
employers@cityofbristol.ac.uk

General enquiries:

0117 312 5000
enquiries@cityofbristol.ac.uk
cityofbristol.ac.uk
[facebook.com/cobcollege](https://www.facebook.com/cobcollege)
[@CoBCollege](https://twitter.com/CoBCollege)
[linkedin.com/company/city-of-bristol-college](https://www.linkedin.com/company/city-of-bristol-college)

